

IEEE Student Branch Leadership training

Putra Hotel KL
16th - 17th March 2013



Md Pauzi Abdullah
ExComm- Chair of Student Activities
IEEE Malaysia Section 2013

IEEE Student Branches of Malaysia- 2013

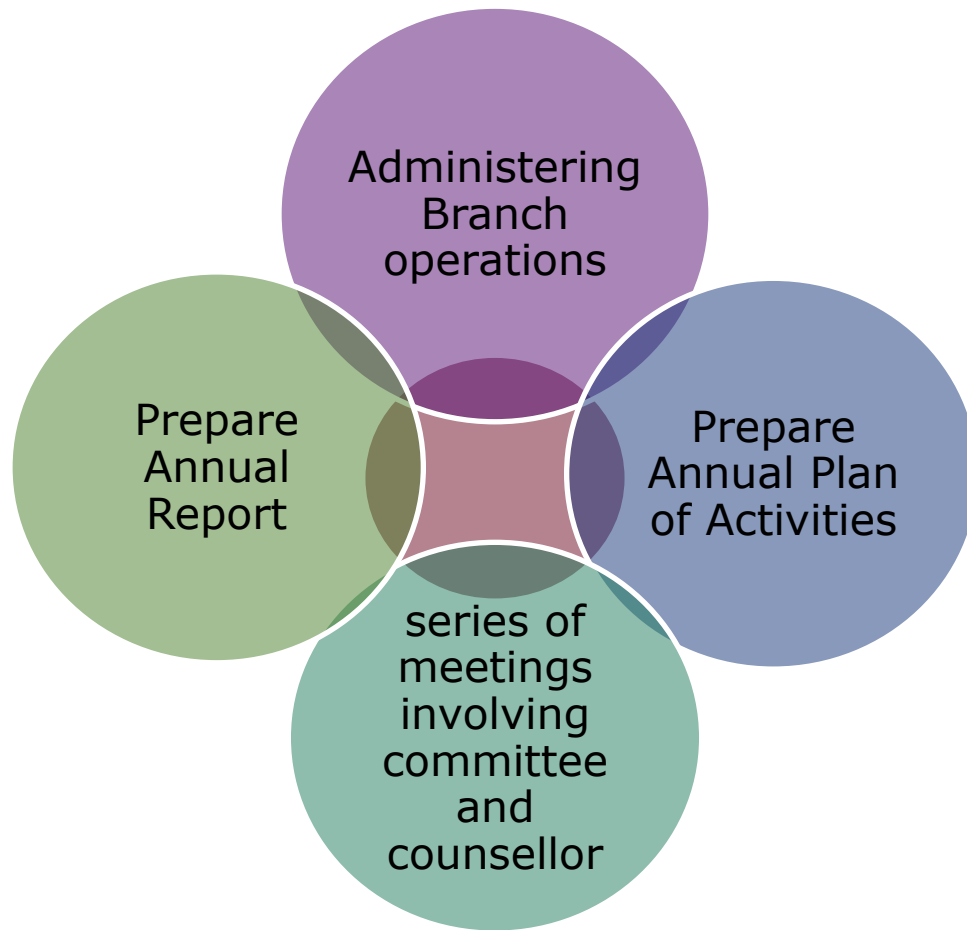
No.	IEEE Student Branch	Counsellor	Chair
1	UIAM	Musse Mohamud Ahmed	-
2	UKM	Ramizi Mohamed	Saleh Javadi
3	UM	Fatimah Ibrahim	Wisam Al fakhri
4	UMS	Farrah Wong Hock Tze	Rodery Samuel Anak Terry Manak
5	MMU	Mohamad Yusoff Alias	Umair Ashfaq Bhatti
6	UPM	Azura Che Soh	Muhammad Adil B. Ismail
7	USM	Rosmiwati Mohd Mokhtar	Yong Bang Ming
8	UTM	Mazlina Esa	-
9	UiTM	Azrif Manut	Nazmi Abd. Ghani
10	UTP	Fawnizu Azmadi Hussin	-
11	Uniten	Yasmin H Md Thayoob	Aiman Ismail
12	UTAR	Morris Abraham G Ezra	Hau Lee Cheun
13	Monash	Madhavan Shanmugavel	YiXiong Chong
14	Curtin Sarawak	Alpha Agape	Esther Ling

RESPONSIBILITIES OF STUDENT BRANCH

[1] Student Branch Officer Responsibilities and Administration:

http://www.ieee.org/membership_services/membership/students/branches/officers.html

BASIC RESPONSIBILITIES OF STUDENT BRANCH



Example of activities

- Invite speakers on technical or professional subjects.
- Organize field trips to Industry.
- Mentor junior students.
- Organize sales of lab kits, lab manuals, resume books, solved past exams.
- Raise funds for charity or Student Branch projects.
- Publish a Student Branch Newsletter on the web.
- Develop a Student Branch web site. Free web space at <http://ewh.ieee.org>
- Visit and organize joint activities with other Student Branches.

Issues

- No AGM
- Did not submit officer reporting online
- Did not submit annual report online
- Website not update/ no website
- Student branch inactive, no activities
- Not enough student members to run activities
- Lack of communication between student branches, between SB-IEEE Malaysia section

2012 Initiatives

- 1. E-mail Groups for all counsellors and chair of IEEE SB/committee
- 2. Facebook page

Update on Student Activities

- New Student Branch (under process): University of Nottingham Malaysia Campus (UNMC)
- IEEE-Malaysia Section has budget allocation for student activities-separate account
 - RM250 will be distributed to each Student Branch-base on submitted report
- SCORED 2012- UKM, venue TBD
- SCORED 2013- TBD

THE END

■ Thank You