

Leadership Skills Workshop and Strategic Planning

Hotel Putra, Kuala Lumpur
16-17th March 2013

IEEE Malaysia Section

<http://ieeemy.org/mysection>

Leadership Skills Workshop and Strategic Planning

Hotel Putra, Kuala Lumpur
16-17th March 2013

Norliza Mohd Noor
Chair
IEEE Malaysia Section
norliza@utm.my

IEEE Membership By Region

31 December 2012

R7 - 17,861
(4.2%)

R1 to 6 - 206,785
(48.2%)

R1 - 35,133 (8.2%)

R2 - 31,238 (7.3%)

R3 - 30,868 (7.2%)

R4 - 23,100 (5.4%)

R5 - 29,399 (6.9%)

R6 - 57,047 (13.3%)

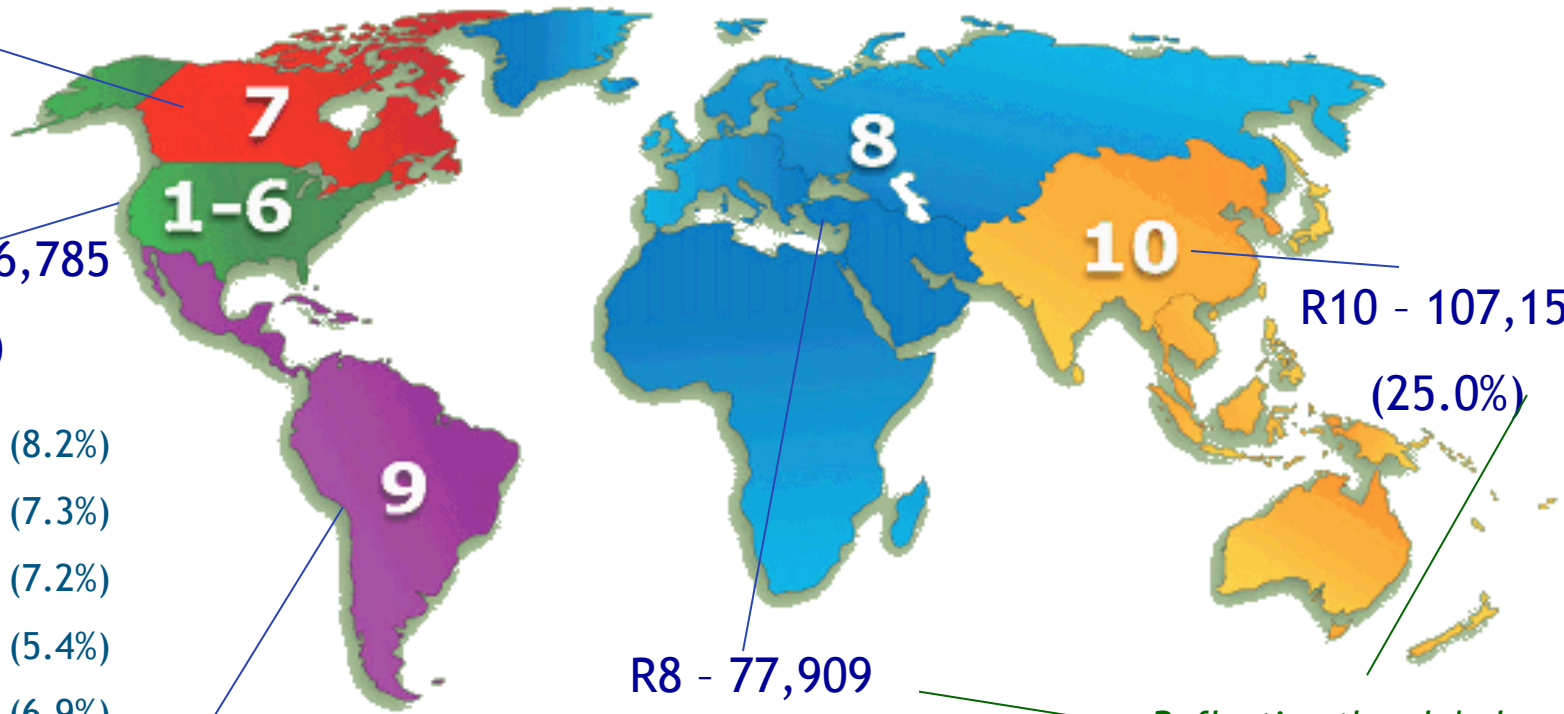
R9 - 18,235
(4.38%)

R8 - 77,909
(18.2%)

R10 - 107,154
(25.0%)

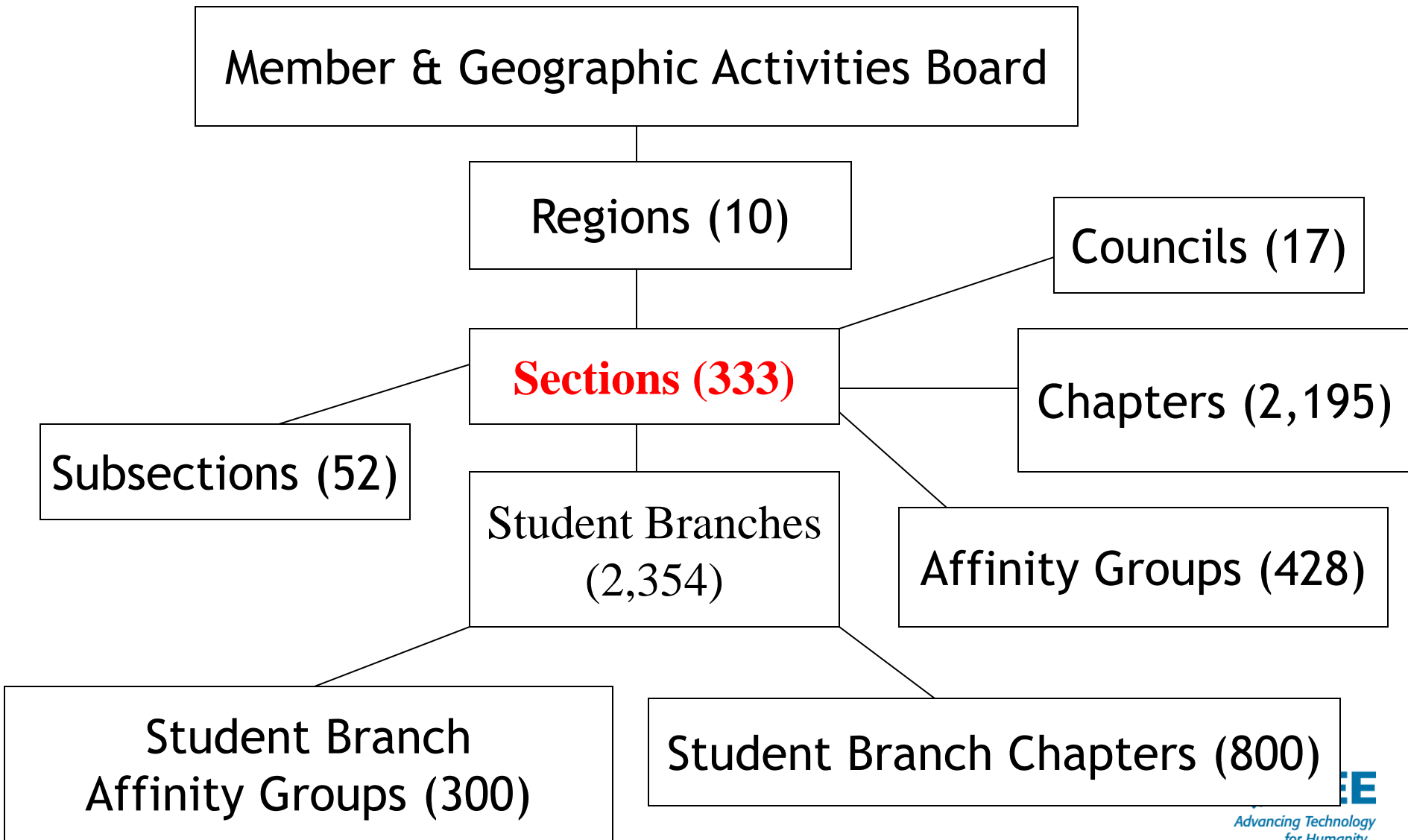
Reflecting the global nature of IEEE, R10 and R8 are now the two largest IEEE Regions

TOTAL MEMBERSHIP - 429,085



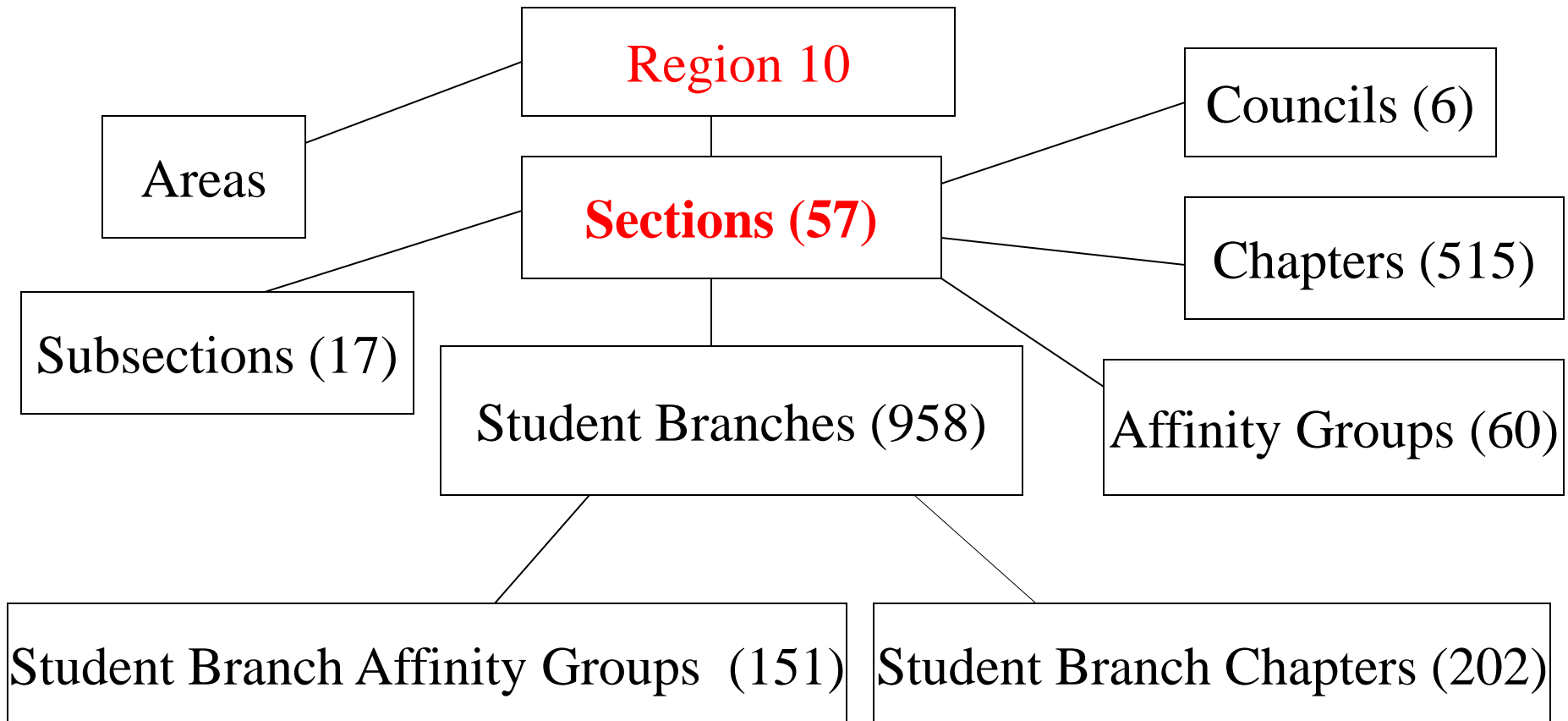
Total Geographic Organizational Units

31 Dec 2012

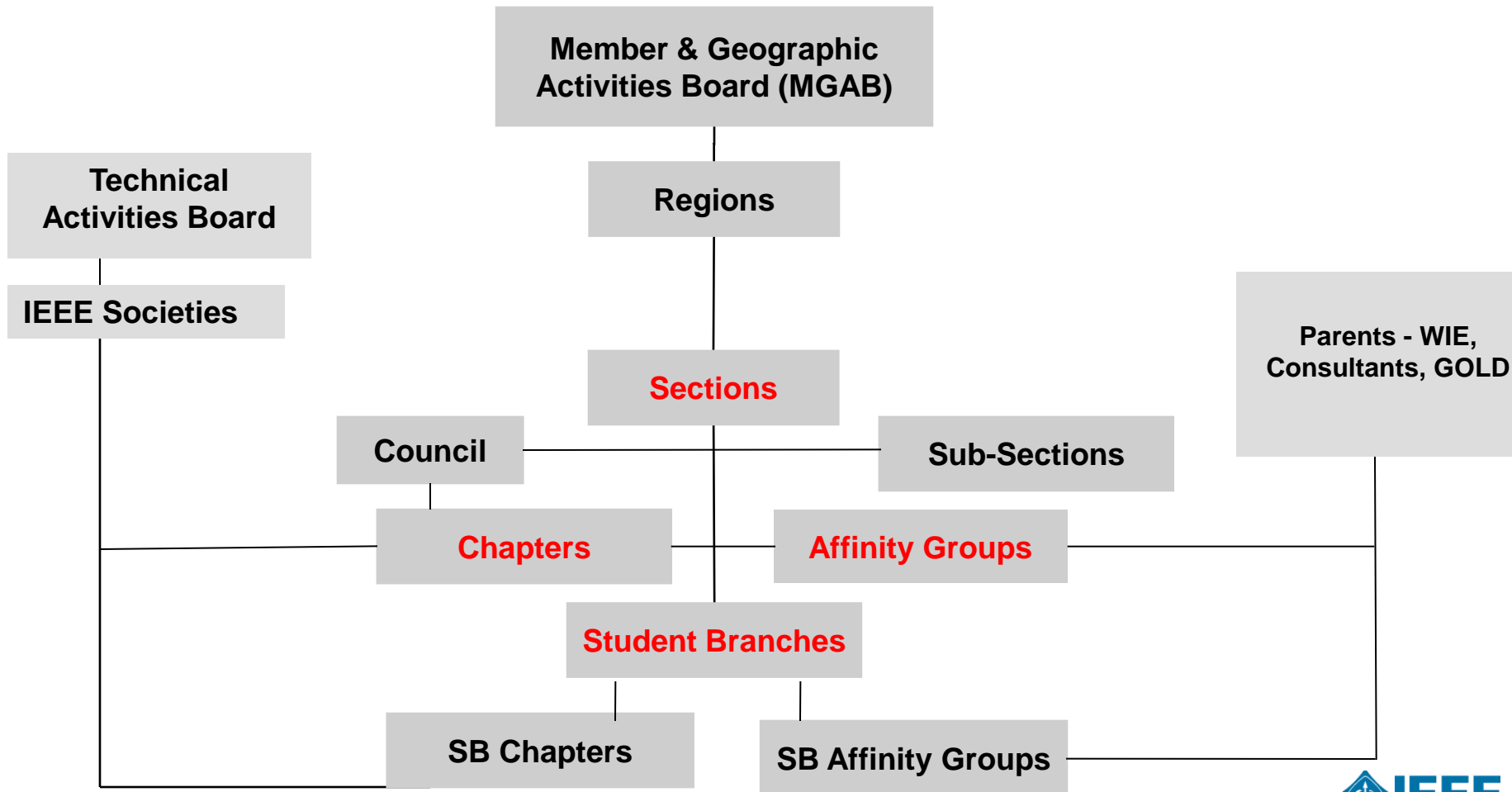


Region 10 Geographic Units

31 December 2012



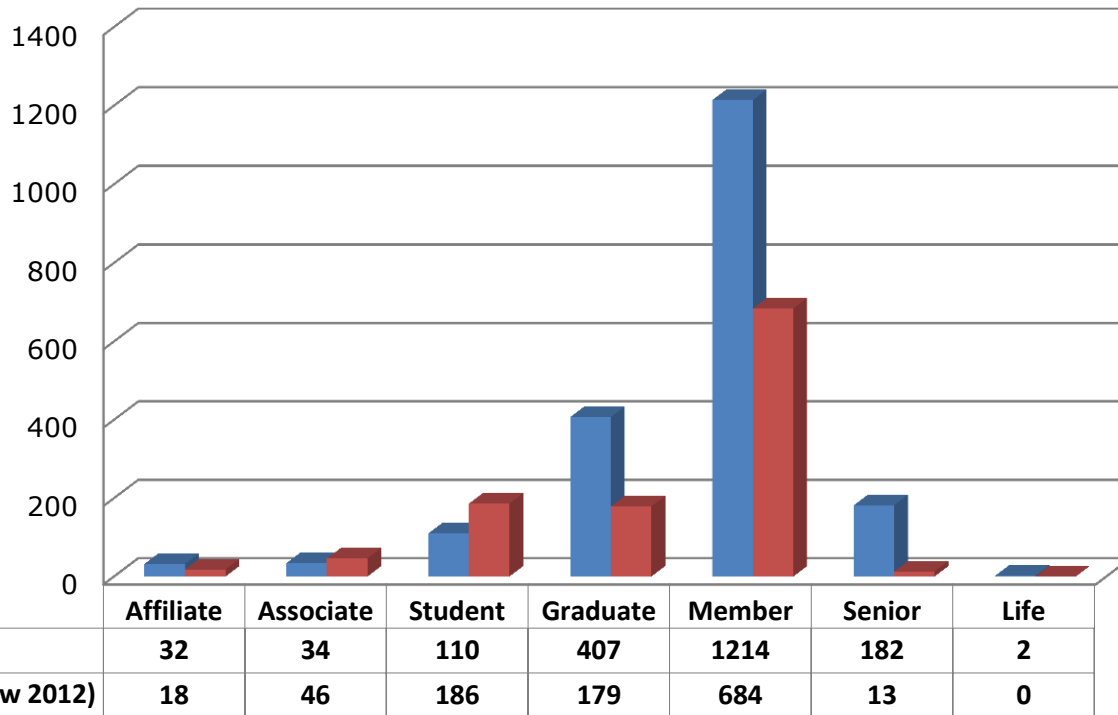
1. Geographic & Technical Unit Relationship



IEEE Malaysia Section Membership

IEEE Malaysia Section
Members Status (as of 4th March 2013)

Total : 1981
Arrears: 1126



List of Chapters

#	Chapter	Chair
1	AP/MTT/EMC	Dr. Mohd Khairul Mohd Salleh
2	CAS	Fawnizu Azmadi Hussin
3	COMPUTER	Abdul Rahim Ahmad
4	COMSOC/VT	Nordin Ramli
5	CONSUMER ELECTRONIC	Abdul Rahman Ramli
6	CPMT	Chee Choong Kooi
7	CSS	Mohd Nasir
8	EDS	Ibrahim Ahmad
9	EDS/MTT/SSCS Penang	Jagadeshwaran
10	EDUSOC	Juliana Johari
11	EMBS	Chong Yu Zheng
12	GOLD	
13	IM	Teddy Surya Gunawan
14	PELS/IE/IA	Mustafar Kamal Hamzah
15	PES	Mohd Zainal Abidin Ab Kadir
16	PS	Ahmad Shukri bin Muhammad Noor
17	RAS	S. Parasuraman
18	SMC	Wang, Xin
19	SP	Mohammad Faizal Ahmad Fauzi
20	WIE	Rozita Jailani
21	GRS	Koo Voon Chet

List of Student Branch

No.	IEEE Student Branch	Chair	Counselor
1	UIAM		Dr Musse
2	UKM	Saleh Javadi	
3	UM		
4	UMS	Rodery Samuel Anak Terry Manak	Muralindran Mariappan
5	MMU		
6	UPM		
7	USM	Yong Bang Ming	
8	UTM		
9	UiTM		
10	UTP		
11	UNITEN		
12	UTAR		
13	Monash University (Sunway Campus)		Madhavan Shanmugavel
14	Curtin University of Technology (Sarawak Campus)		

IEEE Malaysia Vision (2013)

- Giving back to the community
- Increase the student membership
 - By increasing the number of student branch
 - Active student branch: be more relevant
 - Student leads
 - Section Student Representative will represent the Malaysia student members in the IEEE Student Congress in Hyderabad

IEEE Malaysia Vision (2013) (continue)

- Increase the membership
 - Active chapter
 - Each member be more involved either via chapters or direct to section
- Members Benefit
 - A few seat for Free non-presenter registration for all IEEE TCS and IEEE sponsored conference
 - Will be base on first come first serve basis
 - Welcome ideas from members

IEEE Malaysia Vision (2013) (continue)

- Better Communications – will improve website and newsletter
 - All chapter must follow the IEEE template and guidelines for website
 - Application form for activity grant, student activity grant, seed money, etc will be available online
 - Feedback from members are welcome

3. Operational Effectiveness

Timely electronic reporting of :

1. Current Officers

Vtools.OfficerReporting

http://www.ieee.org/societies_communities/geo_activities/required_reporting/officer_forms.html

2. Meeting Activity: Vtools.Meeting (L31)

http://www.ieee.org/societies_communities/geo_activities/required_reporting/meeting_form.html

3. Financial Activity : Online Netsuite

http://www.ieee.org/societies_communities/geo_activities/required_reporting/financial_reporting.html

Deadline – second Friday of February of the year (15 February 2013) for 10% Bonus

- 31 March 2013 is final deadline to submit reporting in order to receive rebate for 2012 activities.

- Section rebates paid by 30 April for on-time reporting 15 Feb 2013.

Officer Reporting

- **Officer Confirmation reporting online (login with web account)**
<http://officers.vtools.ieee.org/>
- **Officer eligibility**
except Newsletter Editor and Webmaster - anyone may hold those positions
http://www.ieee.org/societies_communities/geo_activities/volunteer/qualify.html

Qualifications to be an IEEE Geographic Unit officer :

- ❑ **IEEE Membership must be current (membership dues must be paid) upon entering office, and must be maintained throughout term of office.**
- ❑ **Membership Grade of "Graduate Student Member" or above. Graduate Student Member, Member, Senior Member, and Fellow grades qualify; Student and Associate Member grades do not.**
- ❑ **Membership in the Geographic Unit in which office is to be held.**
- ❑ **Chapter Officers, in addition to the above requirements, must also have and maintain membership in the Chapter's Society. In the case of JOINT CHAPTERS, membership in any (1) of the Societies is sufficient.**

Financial Reporting: Netsuite

http://www.ieee.org/societies_communities/geo_activities/required_reporting/financial_reporting.html

Netsuite Year-End Training

Webcast: Thursday, February 28, 2013

Time: 8:00 pm, Eastern Standard Time (New York)

Weekly Netsuite Training sessions

Webcast Dates: March 14th 8 PM EST

March 28th 8 PM EST

2012 SECTION REBATE SCHEDULE FOR 2011 ACTIVITIES

http://www.ieee.org/societies_communities/geo_activities/required_reporting/rebate_schedule.html

- **Rebate schedule based on 31st December membership numbers**

Includes US\$2,000 Section Rebate, plus:

- **\$4 / Fellows & Senior Members**
 - **\$3 / Associate, Member & Students**
 - **\$1.50 / Affiliate**
 - **\$500 / Active Subsection**
 - **\$200 / Active Chapter or Affinity Group**
- **New Sections: pro-rated from formation date to 31 Dec 2011**
 - **10% Bonus for reporting on time i.e: Friday 15 February 2013**

ACTIVITY BONUS

- a) **All Sections reporting 10 meetings or more, at least 5 of which be of a technical nature, shall received an additional US\$200**
- b) **All Subsections reporting 10 meetings or more, at least 5 of which be of a technical nature, shall received an additional US\$100**
- c) **Joint meetings may be counted toward only one unit's bonus.
For example, joint meetings of different Chapters and/or Affinity Groups may not be counted as a meeting for both units.**
- d) **All Chapters or Affinity Groups reporting 6 or more meetings of a technical nature shall receive an additional US\$75.**
- e) **Activity bonus funds are excluded from the 10% bonus for timely reporting.**

**To qualify for Activity Bonus: Meeting Reporting Bonus
deadline: Second Friday in February of the year (**Friday
15 February 2013**)**

Welcome to the IEEE Center for Leadership Excellence!

The IEEE Center for Leadership Excellence (CLE) serves as the repository for all leadership training material within IEEE. The CLE keeps pace with its evolving organization. Additionally, it will meet the needs of IEEE volunteer leadership by providing resources that enable volunteers to accomplish their jobs efficiently and effectively; thus allowing them to spend more time ensuring the success of IEEE activities so that IEEE member satisfaction and relevance continue to grow.

The IEEE CLE makes information easily available with a Learning Library in key areas of education and training. This library is updated regularly with new courses as they become available. Volunteers will now benefit from having access to full training modules in their positions which will provide a one place to go for all their training needs. This includes a Quick Start module to help get you up to speed during their first 30 days in their position, a job description for their role, time line of key dates and recommendations that support the particular aspect of their role.

 [CLE Volunteer & Staff Recognition](#)

[Volunteer Position Training](#)

Learning Library

[Volunteer Position Training](#)

[Career](#)

[Communications](#)

[Finance](#)

[Leadership](#)

[Management](#)

[Program](#)

[Vitality](#)

[Membership](#)

[Tools](#)

Search courses:

Go

Training Modules for 25 volunteer positions

- [Section Chair](#)
- [Section Vice Chair](#)
- [Section Secretary](#)
- [Section Treasurer](#)
- [Section Technical Chapter Chair](#)
- [Section Consultants Network Affinity Group Chair](#)
- [Section GOLD Affinity Group Chair](#)
- [Section Life Member Affinity Group Chair](#)
- [Section Women in Engineering Affinity Group Chair](#)
- [Section Affinity Group Vice Chair](#)
- [Section Educational Activities Chair](#)
- [Section Industry Relations Chair](#)
- [Section Membership Development Chair](#)
- [Section Professional Activities Chair](#)
- [Section Student Activities Chair](#)
- [Section Student Representative](#)
- [Section Student Branch Mentor](#)
- [Student Branch Chair](#)
- [Student Branch Vice Chair](#)
- [Student Branch Secretary](#)
- [Student Branch Treasurer](#)
- [Student Branch Counselor](#)
- [Student Branch Chapter Chair](#)
- [Section Nominations and Appointments Chair](#)
- [Section Awards and Recognition Chair](#)

Other available training modules

Learning Library

- [Volunteer Position Training](#) 25
- [Career](#) 7 (managing career, lifecycle of an engineer, networking skills, publishing skills)
- [Communications](#) 1 (communicating effectively)
- [Finance](#) 3 (financial Management for Section/Chapter, Netsuite)
- [Leadership](#) 6 (leadership development)
- [Management](#) 5 (building Industry alliances, management & people skills, volunteer recruitment & retention)
- [Program](#) 15 (organizing conferences, IEEE Foundation, Humanitarian Efforts etc.)
- [Vitality](#) 16 (building Section/Chapter/Society relationships, engaging members etc.)
- [Membership](#) 14 (membership development, grade elevation & recognition, membership benefits etc.)
- [Tools](#) 6 (SAMIEEE, Webinar, Vtools, MD Resources & Tools, etc.)

Automatic Access for Organizational Unit volunteers.

Volunteers must be currently reported in the position.

If an access denied message appears when logging in, please verify that your Organizational Unit has submitted [current officer reporting](#).

Section/Council/Subsection Chairs

Section/Council/Subsection Vice Chairs

Section/Council/Subsection Secretaries

Section/Council/Subsection Treasurers

Section/Council/Subsection Secretary/Treasurers

Section/Council/Subsection MD Chairs

Section/Council/Subsection Student Activities Chairs

Chapter / Joint-Chapter Chairs

GOLD Affinity Group Chairs

**Thank You
for your Attention
and
Active Participation**